


---

P R O - S E R I E S

# *The Tiger*

At **AMEN CORNER** you will find  
 an exclusive lifestyle inspired by the beautiful view  
 of Deacons Walk Golf Course.

These incredible single family golf villas  
 capture the essence of luxury.

The soaring ceilings along with the wall to wall glass  
 bring together breathtaking views.

At Paulson Construction dreams are fulfilled  
 with our focus on craftsmanship and  
 excellence in design.



*Single Family*

*Golf Villas*

*in a*

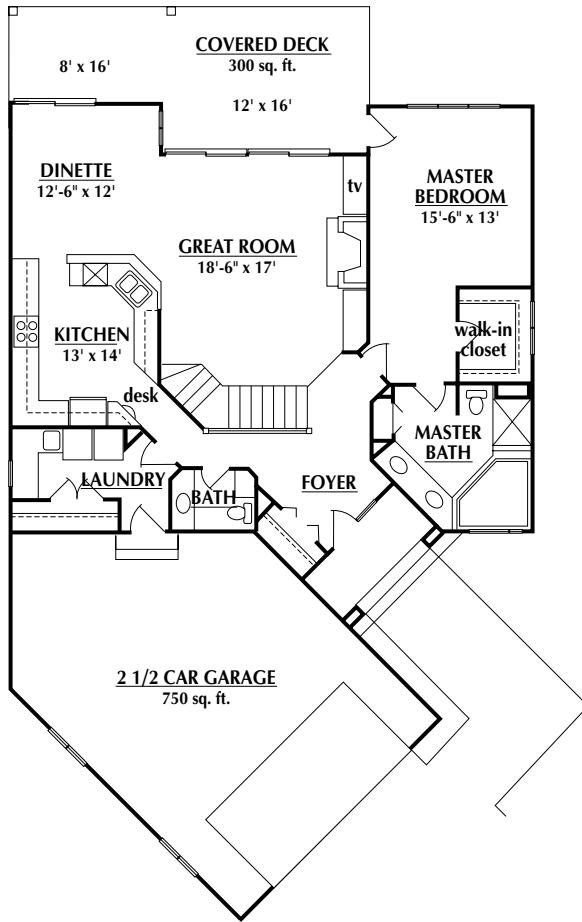
*Planned*

*Association*



â[~\*]æ|[.]ïO&{ &æç^c  
 ïïHëïïEëG  
 . . . Ëæ|[.]&}.d~&ç}Ë{ Á

MAIN LEVEL



*The Tiger Highlights*

- Golf Privileges to Deacons Walk Golf Course
- Interior Design by Doug Paulson
- Honeywell "Perfect Climate Home"
- Towering 10' Ceiling in Main Level
- 2 1/2 Car Garage
- Total Kohler Home
- Generous 9' Ceiling in Lower Level
- Innovative Design in Cabinetry & Lighting
- Advanced Telecommunications
- Main Level—1518 sq. ft.
- Lower Level—1000 sq. ft.

LOWER LEVEL

